

INTRODUCING

Eri & Muga Silk Fabrics

By

JPHandloom & JPH Exports Pvt Ltd

in

twitter

f

ABOUT OUR WORK:

Eri Silk, also known as "Ahimsa Silk" or "Peace Silk," is a unique type of silk that is produced without harming the silk moths. Unlike traditional silk production methods, where the silkworms are boiled or steamed alive inside their cocoons to extract the silk threads, Eri silk allows the silkworms to emerge naturally from the cocoon. This cruelty-free silk-making process has deep cultural and ecological significance, especially in India and northeastern regions where it originated.

We at JPHandloom & JPH Exports Pvt Ltd Produce 100% Pure Organic and Peace Eri Silk Fabrics of different GSM. Our Fabrics are getting use by Fashion Designers as well as Home Interior designers all around the globe.

Being the manufacturer, we offer you the service for customization as well. We can customize Fabrics as per your requirement.

The Colors we use are 100% OEKO Certified & AZO Free Dyes. We can also do Natural or Herbal Dyes on your request.

— Inspired by
Environmental Impact !
Nonviolence !
Animal Welfare !
Growing Demand !
Educated Choices !
Long-Term Durability !
Local Economies !



ERI & MUGA SILK FABRICS PRODUCTION PROCESS





JP/T-1186 (GSM: 55)
Eri Silk Light Weight Fabric
Women's Wear, Scarves



JP/T-657 (GSM: 70)
Eri Silk Light weight Fabric
Garments, Womens Wear



JP/T-658 (GSM: 85)
Eri Silk Fabric
Garments



JP/T-658(A) (GSM: 100)
Eri Silk Fabric
Garments



JP/T-11246 (GSM: 125)
Eri Silk Slubby Fabric
Garments



JP/T-664 (GSM: 115)
Eri Silk Handloom Fabric



JP/T-1406 (GSM: 120)
Eri Silk(70%) Bamboo(30%)
End use: Garments



JP/T-1138 (GSM: 155)
Eri Silk Fabric 2 Ply Tight Weave
Garments



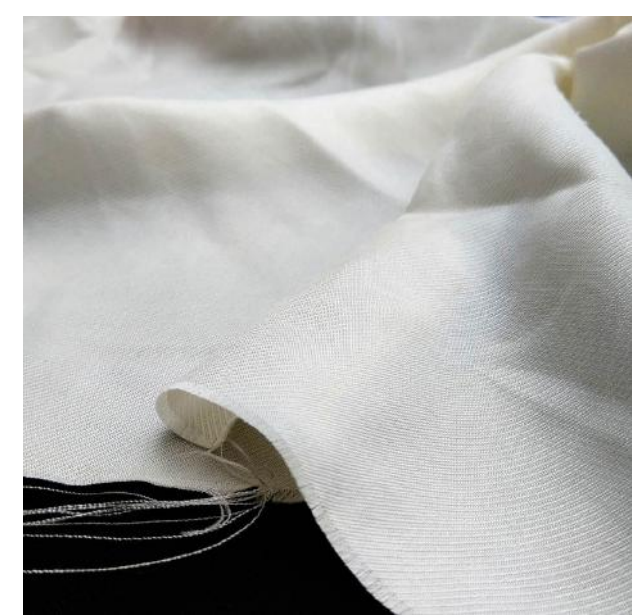
JP/T-1259 (GSM: 130)
Eri Silk Fabric
Garments, Cushion Cover



JP/T-1260 (GSM: 135)
Eri Silk Handloom Fabric
Garments



JP/T-750 (GSM: 85)
100% Eri Silk Diamond Fabric
End Use: Scarves, Garments,



JP/T-971 (GSM: 80)
100% Eri Silk Twill Fabric
End Use: Scarves, Womens Wear



JP/T-750-Dyed (GSM: 85)
Eri Diamond Cross Color Fabric



JP/T-750 (GSM: 85)
Eri Silk Diamond Cross Color
Fabric



JP/T-670 (GSM: 160)
100% Eri Silk Handloom Fabric
Garments, Home Decor



JP/T-797 (GSM: 160)
Handloom Eri Silk Stripe Fabric
Home Decor, Garments



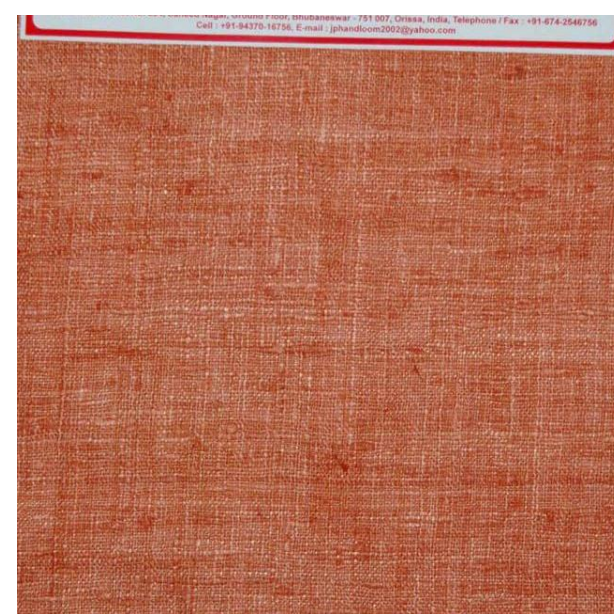
JP/T-1412 (GSM: 100)
100% Bamboo Handloom Fabric
End Use: Shirts, Womens Wear



JP/T-304 (GSM: 285)
Cotton(30%) Eri Silk(70%) Fabric
Jackets, Home Decor, Upholestery



JP/T-308 (GSM: 280)
Eri & Tussar Silk Fabric
End Use: Jackets, Upholestery



JP/T-308 (GSM: 280)
Eri & Tussar Silk Fabric Dyed
End Use: Jackets, Upholestery



JP/T-1062 (GSM: 235)
Bamboo Linen Handloom Fabric
End Use: Womens Wear



JP/T-1177 (GSM: 130)
100% Bamboo Fabric
End Use: Shirts, Womens Wear



K-825 (GSM: 165)
100% Eri Silk Handloom Fabric



JP/T-079 (GSM: 250)
Cotton(30%) Eri Silk(70%)
Gfabric



JP/M-094(GSM: 60)
100% Muga Silk Handloom
Light Weight Fabric



JP/M-094-A(GSM: 75)
100% Muga Silk Handloom Fabric
Garments, Womens Wear



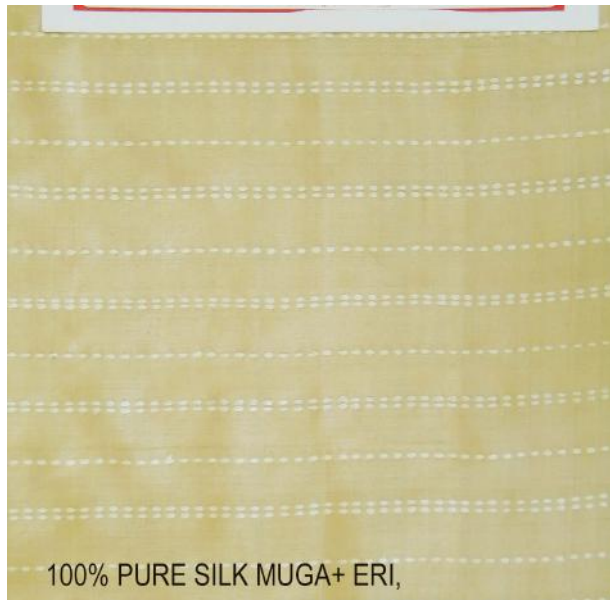
JP/M-089 (GSM: 58)
100% Muga Silk Light Weight
Fabric



JP/T-1194-(GSM: 90)
100% Muga Silk 2 Ply Fabric
Garments, Oby, Kimono

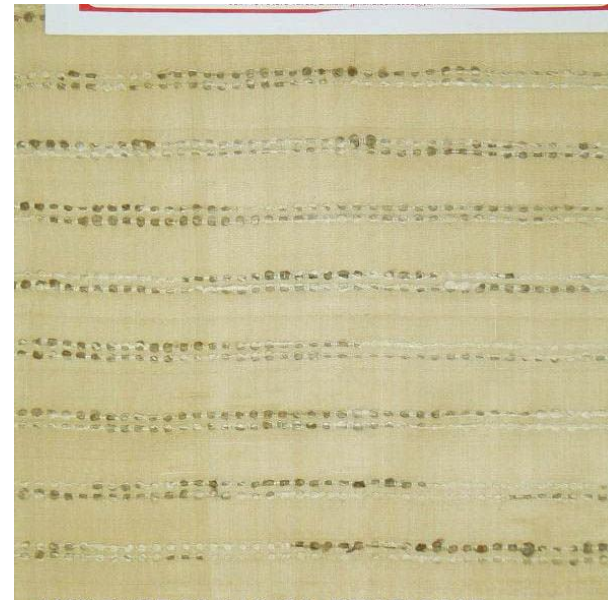


JP/T- 1718-(GSM: 175)
Muga Silk Handloom Fabric
GHarmnts



100% PURE SILK MUGA+ ERI,

JP/T- 082-(GSM: 125)
Muga & Eri Silk Blended Fabric



JP/T-085-(GSM: 140)
Muga Silk & Tussar Silk Blended
Fabric



JP/T-1748-(GSM: 225)
Muga Silk Knitted Fabric
Tshirts, Sweaters



DYEING, PRINTING & SOCIALLY ACTIVE MOMENTS



CONTACT

in

twitter

f

Say Hello!

Inquiry & Customer Service:

jpsingh.jph@gmail.com

Whatsaap: +91-9778919302

**We can supply you Best Quality Peace Silk Fabric.
Our Fabrics are best for your Garments, Accessories and Home Decor Products.**

www.jphandloom.in / www.jphexports.in